

# MONTHLY MEMBERSHIP PROGRESS REPORT

District 27 B2

Results as of: 6/30/2024

GMT:

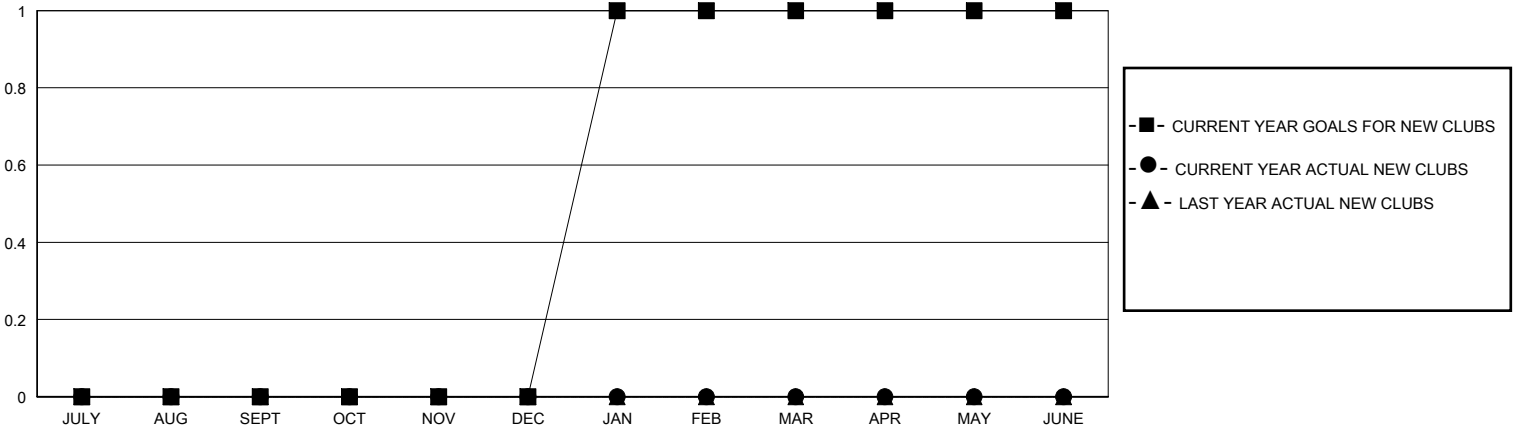
LOCATION WISCONSIN

GMT CA

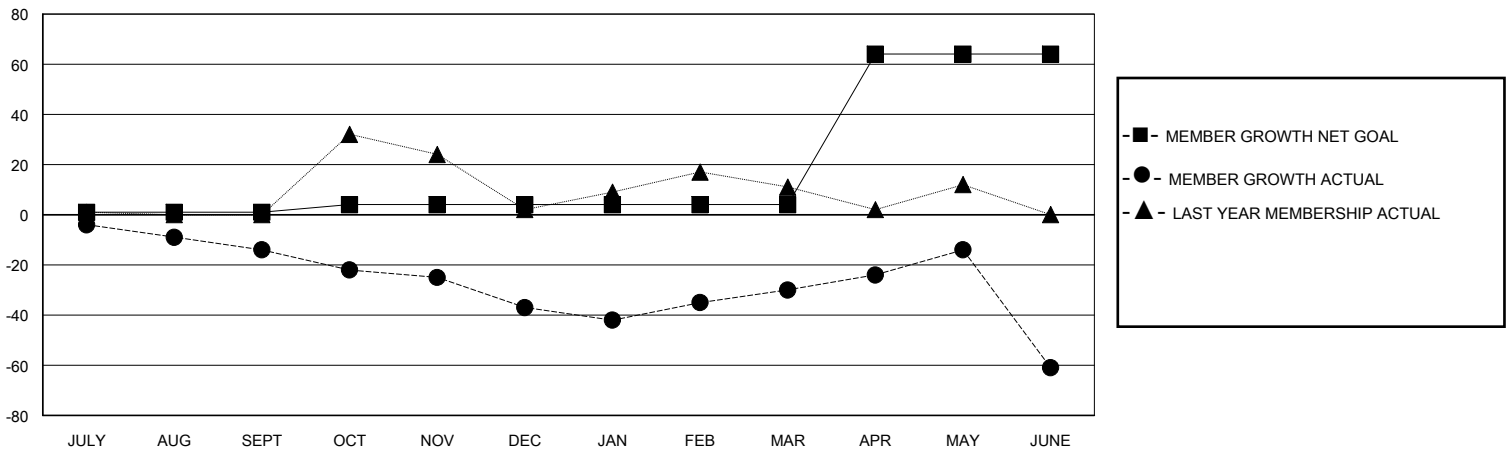
Clubs			
RESULTS FOR 2023-2024			
QUARTER	NEW CLUB GOAL	NEW CLUBS	DROPPED CLUBS
JULY/AUG/SEPT	0	0	0
OCT/NOV/DEC	0	0	0
JAN/FEB/MAR	1	0	0
APR/MAY/JUNE	0	0	0

Members			
RESULTS FOR 2023-2024			
QUARTER	MEMBER GROWTH NET GOAL	MEMBER GROWTH ACTUAL	DROPPED MEMBERS ACTUAL (including transfers)
JULY/AUG/SEPT	1	30	44
OCT/NOV/DEC	3	25	45
JAN/FEB/MAR	0	45	35
APR/MAY/JUNE	60	37	67

GOALS AND ACTUAL NEW CLUBS CUMULATIVE



GOALS AND ACTUAL MEMBERS CUMULATIVE



DROPPED CLUBS: 0	44 CLUBS OF 67 ADDED 1 OR MORE NEW MEMBERS	<b>GENDER DISTRIBUTION</b> MALE 1,585 (75.01%) FEMALE 528 (24.99%)
<b>DROPPED MEMBERS</b> DECEASED 32 CLUB CANCELLED 0 OTHER 159 TOTAL 191	<a href="#">CLICK HERE FOR CUMULATIVE MEMBERSHIP DATA</a>	TOTAL FAMILY UNIT MEMBERS 368 FAMILY MEMBERS PAYING HALF DUES 185